

The World of Yuken Products



Depend On Us

PRECISION HYDRAULIC PRODUCTS FOR EVERY NEED

Yuken India Ltd (YIL) was established in 1976 in technical & financial collaboration with Yuken Kogyo Co.Ltd., Japan. YIL's Manufacturing unit is located in Bangalore (Whitefield, Peenya) Mumbai & New Delhi. Sales and distribution network is spread across India.

Today YIL is the most preferred source of supply for most of the original equipment manufacturers in India .

PRODUCT RANGE

Vane pumps

- Fixed displacement
- Variable displacement

Piston pumps

- Variable displacement with various control options

Gear pumps

- Flange mounted
- Manifold mounted

Pressure controls

- Relief valves
- Sequence valves
- Reducing valves
- Unloading valves
- Counterbalance valves
- Pressure switches

Flow controls

- Feed control valves
- Flow control valves, flow control with check valves
- Throttle valves with check valves
- Deceleration valve, deceleration with check valves

Directional controls

- Solenoid operated valves
- Pilot operated valves
- Manually operated valves
- Check valves

Modular control valves

- 01- series
- 03- series
- 04- series
- 06- series

E Series proportional-Electro hydraulic valves

- Pilot relief valves
- Relief valve
- Reducing with relieving valve
- Flow control with check valves
- Flow control with relief valve

High response type proportional valves

- Electro Hydraulic - Direction & Flow Control Valve

Linear servo valves

Cartridge valves

- Solenoid operated direction control logic valves
- Solenoid operated direction control relief valves

Parison controllers

Mobile control valves

- Monoblock
- Sectional

Total machine control for-injection moulding machine

Actuators

Accumulators

Custom built / standard power units

Accessories for hydraulic-power packs

Shavings compactor

- Indigenous manufacturing strength
- Japanese technology
- Leaders in industrial hydraulics
- All-India sales and service network
- Wide range of pumps and valves
- Prompt and personalised service
- Reliable, efficient products
- Power - saving
- Leakage prevention

- Custom - built hydraulic power packs with quick delivery
- Retro fitment of conventional hydraulics
- Hydraulic training courses
- R & D Advanced to develop new products
- Field problem solving
- Upgradation of technical service
- Global exports

QUALITY POLICY

An ISO 9001:2008 Certified

"We will strive to meet customers' expectations by providing world-class hydraulic products, components and services through total employee involvement and continual improvement".

OUR STRENGTH : WE CUSTOMISE TO MEET OUR CUSTOMERS' REQUIREMENTS.

PRODUCT RANGE

This catalogue is to introduce the line up of our products. The guide does not present the detailed technical dimensions, specifications and characteristics of each and every product. If you require such information, log on to www.yukenindia.com

Variable Displacement Piston Pumps

'AR'/'A' series pumps are renowned for **high efficiency** and **low noise** level due to the usage of Aluminum body. The size of 'AR' series pump is more compact with reduced mass. The noise level is considerably low. **A3H** series, the ultimate design pump developed by Yuken's own technology, is consequently extended with wide displacement range & pressure.



Pump Type	Max. Operating pressure Kgf/ cm ²	Geometric displacement cm ³ / rev												
		10	20	30	50	100	200	300						
'AR' Series	160	AR: 16 - 22												
'A' Series	210	A: 10 16 22 37 56 79 90 100 145												
'A3H' Series	280	A3H: 16 37 56 71 145 180												

Variable Displacement Vane Pumps

'RV20' series pumps provide exceptional reliability with consistent performance and are widely used for machine tool applications.



Pump Type	Max. Operating pressure Kgf/ cm ²	Geometric displacement cm ³ / rev						
		5	10	15	20	25	30	35
'RV20' Series	100	RV20: 11						
'SVPF' Series	70	SVPF: 10 12 16 20 25 30 35						

Fixed Displacement Vane Pumps

Silent Pumps

'SVP' series pump is a low-noise, low-pulsation type, available in a wide range small capacity single stage vane pump to high pressure double pump.



Pump type		Max. operating pressure Kgf/cm ²	Geometric displacement cm ³ / rev									
			10	20	30	40	50	100	150			
SVP Series	Single pumps	175	SVP 1T: 4 - 26									
		210	SVP 2: 11 - 47									
	210	SVP 12: 15 - 73										
Double pumps	210	SVP 23: 58 - 185										

Standard Pumps

'PVR' series pumps are in use for the general machine tool applications. Available as single pumps as well as double pumps.

'PVM' series pumps are developed specially for mobile applications. Available as single pumps as well as double pumps with spline shafts, SAE-A, BB, C as options.



Pump type		Max. operating pressure Kg/ cm ²	Geometric displacement cm ³ / rev								
			10	20	30	40	50	100	200	300	
PVR Series	Single pumps	175	PVR- IT: 4-16			PVR 50: 10 - 47			PVR150: 47- 142		
	Double pumps	175	PVR1050: 17- 62						PVR50150: 57-160		
PVM Series	Single pumps	175	PVMIT: 4 - 16			PVM 50: 10 - 47			PVM150: 47 - 142		
	Double pumps	175	PVM1050: 17 - 62						PVM 50150: 57 - 160		

High pressure pumps

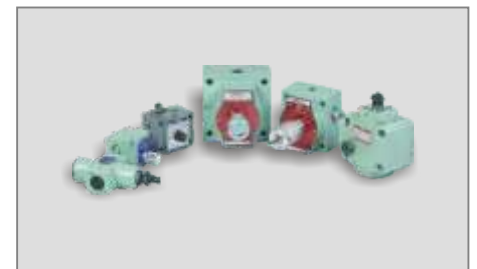
HPV series pumps are designed for high pressure application.



Pump type	Max. operating pressure Kg/ cm ²	Geometric displacement cc/rev									
		10	20	30	40	50	100	200	300		
HPV Series	Single pumps	280	HPV2: 11 - 100						HPV3: 15 - 190		
	Double pumps	240	HPV22: 22 - 94						HPV32: 57 - 290		

Flow Control Valves

These valves can control the rotary & reciprocating speeds of the actuator and also can be used for applications where accurate flow is required. Wide range of flow control valves including pressure and temperature compensated with locking facility is available.



Valve Type	Max. Operating pressure Kg/cm ²	Max. Flow L / min					
		5	10	30	50	100	150
Flow Control Valves	140	FG-01		FG-02		FG-03	
	210	FCG-01		FCG-02		FCG-03	
Flow Control and Check Valves	140	SRCT/ G-03		SRCT/ G-06			
	210	ZG-03		ZG-06			
Deceleration Valves	210	ZCG-03		ZCG-03			
	210	UCF*G-01		UCF*G-03			

Pressure Control Valves

Wide range of pressure control valves are available as below. These valves are highly accurate and suitable for fine adjustment.



Valve Type	Max. operating pressure Kgf/ cm ²	Max. flow L / min									
		5	10	20	30	40	50	100	200	400	
Remote control relief valves	250	YBT									
Direct type relief valves	140	YBT/G-02									
Pilot operated relief valves	250	YBG-03					BG-03 BG-06 BG10 BT-06				
Solenoid controlled relief valves	250	BSG-03 BSG-06 BSG-10 BST-06									
Sequence valves	210	HCT/G-06 / 10									
Pressure reducing & check valves	210	RCG-06 RCG-10									
Unloading relief valves	210	BUCG-06									
Pressure switches	350		SG	YSG	—	—	—	—	—	—	

Directional Control Valves

These valves control the flow direction in the hydraulic circuit. The various direction control valves ranging from solenoid operated directional valves to the check valves are available to meet all needs. Directional Control Valves conform to **ISO 4401 & CETOP 3,5,7,8 & 10**



Pump Type		Max. operating pressure Kgf/ cm ²	Max. flow L / min									
			10	20	50	100	200	500	1000			
Solenoid operated directional valves		315	DSG-01									
			DSG-03									
Solenoid controlled pilot operated directional valves		315	DSHG		04		06		10			
Pilot operated directional valves		315	DHG		04		06		10			
Manually operated directional valves		315	DMG		01		03		06			
Cam operated directional valves		250	DCG		01		03					
Check valves	In line	210	CIT-02		02		03		06		10	
	Right angle	250	CRG		03		06		10			
	Right angle, flanged connection	250	CRF*16									
Pilot operated check valve		250	CP*G-06									

Modular Valves

Modular Valves are designed to simplify hydraulic systems, to eliminate the use of pipe connections and thus to save space, time and cost. These modular valves have **ISO4401, CETOP & NEPA** Interfaces thickness. Various hydraulic circuit can be achieved by stacking the modular valves in the correct sequence, one upon the other.



Valve Type	Max. operating pressure Kgf/ cm ²	Max. flow L / min							
		10	20	50	100	200	500	1000	
01 series modular valves	250	██████████							
03 series modular valves	250	██████████							
04 series modular valves	250	██████████							
06 series modular valves	250	██████████							

List of 01/ 03 Series modular Valves

Name	Model number
Relief	MB*-
Pressure reducing	MR*-
Sequence/ Counter balance	MH*-
Throttle & check	MS*-
Pilot operated check	MP*-
Check	MC*-
Anti - cavitation	MAC*-

Cartridge Valves

These **Cartridge** type valves consist of cartridge elements and covers with pilot passages. Various elements may be combined for direction, flow control and pressure control. These valves can be incorporated in manifold blocks to form optimum integrated hydraulic circuits and compact hydraulic units. Cavity specifications conform to ISO standards.

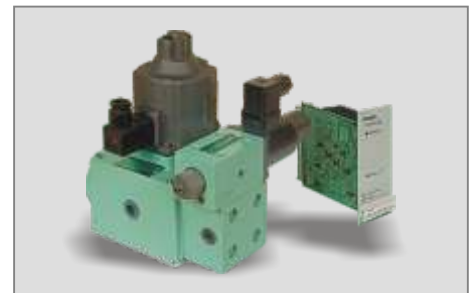


Valve Type	Max. operating pressure Kgf/ cm ²	Max. flow L / min															
		50	100	250	500	1000	1500	2000	2500	2500	3000	3500	4000	4500	5000	5500	6000
Directional & flow control cartridge valve	315	LD*-	10	25	32	50							80				100
Relief cartridge valve	315	LB*-	16	25	32	50											
Solenoid operated directional control	315	LDS*-	██████████														
Solenoid controlled relief valve	315	LBS*-	██████████														

Proportional Valves

E Series proportional hydraulic control valve

These proportional valves are able to control the system pressure or flow proportionally through a controlled input current from the amplifier.



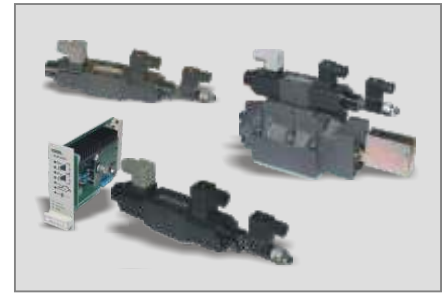
Valve type	Max. operating pressure Kgf/ cm ²	Max. flow L/ min								
		5	10	20	30	40	50	100	200	400
Pilot relief valve	250	EDG-01								
Reducing & relieving Valves	250	ERBG -06								
Relief valve	210	EBG - 03/ 06								
Relief & flow control valve	250	EFBG - 03/ 06								
Direction & flow control valve	250	EHDFG - 01/ 03								
	160	EHDFG - 04/ 06								

High Response Type Proportional Electro Hydraulic Valves

These valves are compound products of hydraulic equipment using the latest electronic and servo technology based on the reputable E series proportional hydraulic electro hydraulic controls. We have realised epoch making easily usable hydraulic equipment with high precision and reliability by unifying amplifier, sensor and digital data indicator which are required for proportional or servo control system into valves and making them compact.

ELDFG-EH Series

The closed loop, High response proportional electro hydraulics directional and flow control valve with OBE(on-board electronics) with a servo valve response characteristics(+/- 25% amplitude) with a fail safe mode with compact strong solenoid and spool position sensor with differential transformer. Option of current and voltage signal available

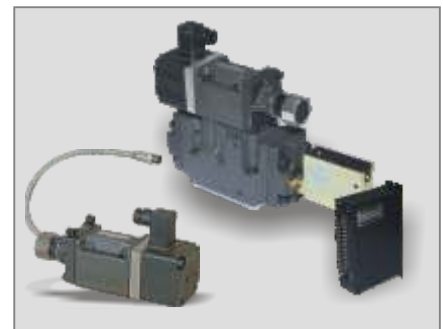


Valve Type	Max. operating pressure Kg/ cm ²	Max. flow L / min							
		10	20	50	100	200	500	1000	
ELDFG/ ELDFG-EH	315	ELDFG - 01		ELDFG - 03					
ELDFHG	350	ELDFHG - 04							

High Speed Linear Servo Valves

LSVG/ LSVHG Series high-speed linear servo valves offer extremely high response and excellent anti-contamination characteristics.

- An intensified small linear motor drives the spool directly
 - A differential transducer electrically detects spool position for feedback control
- These valves are suitable for high speed nibbling machine, high speed injection moulding machine, die casting machine, steel mill equipment, vibration testing machine and various testing machines.



Valve Type	Max. operating pressure Kg/ cm ²	Max. flow L / min							
		10	20	50	100	200	500	1000	
Direct type high speed linear servo valve	350	LSVG-03-04-10- 20-60							
Two stage type high speed linear servo valve	350	LSVHG-04- 06-10							
		LSVHG-04- 06-10							
		LSVHG-04- 06-10							
OBE type	350	LSVHG-03 EH							
		LSVHG-04 EH							
		LSVHG-06 EH							
		LSVHG-06 EH							

ASR Series AC Servo Motor Driven Pumps

	Power Capacity	Max. operating pressure Kg/ cm ²	Geometric displacement cm ³ / rev						
			0	2	5	10	20	50	100
ASR System Servo Motor Driven Pumps	4.5 KW	210	ASR 1						
	6 KW	160	ASR 2						
	8 KW	210	ASR 3						
	11 KW	210	ASR 5						
	15 KW	210	ASR 10						



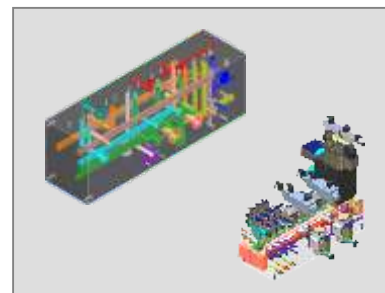
ASE Series AC Servo Motor Driven Pumps

	Power Capacity	Max. operating pressure Kgf/ cm ²	Geometric displacement cm ³ / rev							
			0	2	5	10	20	50	100	
ASE System Servo Motor Driven Pumps	11 KW	175	ASE 3							
	20 KW	175	ASE 5							
	35 KW	175	ASE 10							



Specialized Manifold Blocks

Specialized Manifold Blocks for Conventional , Linear servo, Electro-proportional Valves, Flame Proof Valves.



AMC Series High Efficiency Fan Coolers

These coolers are to cool drain of variable displacement pumps

Model	: AMC-217-15
Max. flow rate	: 11 LPM
Max. working pressure	: 10 Kgf/ cm ²
Power source	: 110/ 220 VAC

◆ Compact ◆ Elegant ◆ High efficiency



Parison Controller

CPU	Digital servo control, high performance CPU used to get high response, 250 μ sec for pattern sweeping
Display	Color graphic LCD display μsec easy setting
Highlights	High response equivalent to servo valve with high tolerance to contamination
Package Includes:	Hydraulic power pack, cylinder, high response proportional valve controller



SK 1121-10

KIRIKO Automatic Shavings Compactor

- Contributes towards ISO 14000.
- Optimal for iron, casting, aluminum, brass, shavings and chips.
- Holds shavings under discriminatory control.
- Largely saves transport costs.
- Saves space for storing shavings.
- Liquid on shavings can be separated and collected in the process of pressing.



Power Units

Yuken India can design and manufacture hydraulic system to suit individual customer requirement. In addition, standard package systems are available which will offer substantial savings in power & space with high performance.

Compact Power Packs

Compact power packs are specially designed for high energy saving power packs to fit into small envelope dimensions and can be used in lifting platforms, elevating tables, manipulators, small presses, machine tools and mobile applications.

Features / Advantages

- Intermittent Operation
- Compact design makes optimum use of space & easy mobility
- Attractive cubic structure
- Zero leak
- High heat dissipation resulting in low oil temperature rise
- Attractive prices
- Reduced noise
- Less fluid required: environmental friendly, little expense for fluid
- Flow and pressure meets variety of application
- TPM friendly
- Extra "cooler" avoided

Application

- | | |
|---------------------|---------------------|
| Machine tool | Power |
| ■ Fixture Clamp | ■ Wind Mill Brake |
| ■ Tool Clamp | Mobile |
| ■ Tool Declamp | ■ Lifting Platforms |
| ■ Job Pusher | ■ Manipulators |
| ■ Small Presses | ■ Elevating Lifts |

Main Specifications

Specifications	Min	Max
Displacement (cc/ rev)	0,66	9.0
Reservoir Capacity (Litres)	2.5	32
Electric Motor (Kw)	0.37	2.2
Max. Operating Pr. (Kg/cm ²)	-	210



Yuken Hydraulic Systems for Steel Mill Applications

Yuken pipeless systems are very popular in steel industry.

- More than 3000 hydraulic systems supplied to the steel industry.
- Yuken systems are serving in mines, steel making, slab & bloom casters, cold & hot rolling, AGC systems & finishing mills.
- Application engineering by Yuken Steel Technology Group supported by Yuken-Japan.
- Vast experience of mill hydraulics in steel industry.
- Supplied to SAIL plants, Tata Steel, Jindal Group, Lloyds, Flat Products, Concast, SMS-Concast, Essar and UMIL.
- Approved by steel mill consultants – M.N.Dastur, MECON Ranchi, SAIL CET - Ranchi, SAIL –RDCIS Ranchi, Engineering Projects India Limited and MECON Kolkata
- Maintenance Friendly and leak free hydraulic systems:
 - Well designed manifolds
 - Pipeless valve stands
 - Pipeless accumulator stands



Divisions & Group Companies

Gear Products Division

- Manufactures wide range of gear pumps for industrial, mobile and agricultural applications.

Characteristics

- High strength aluminium extruded body
- Hardened and ground integral teeth
- Special aluminium alloy bush bearing
- Axially balanced for high volumetric efficiency in excess of 95%



Foundry Division

- Established in 1984 to cater the casting needs of Yuken India Ltd.
- The company specialises in manufacturing hydraulic casting of grey iron and SG iron.
- ISO 9001-2008 certified company.
- We can supply machined castings
- Specializes in pattern and core box development and supply of intricate castings



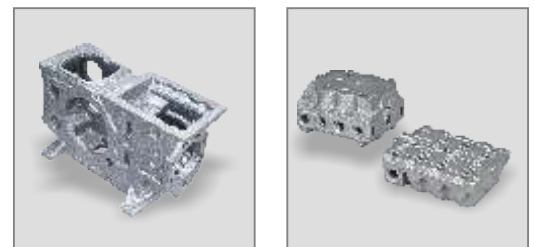
YUKEN India Ltd - Foundry Division

Bangalore

16/C, Doddanekundi Industrial Area,
Mahadevapura Post,
Bangalore - 560 048
Tel: 080-28541059, 41163217
Fax: 080-28541059
E-mail: padmanabha.b@yukenindia.com

Malur

84/171 & 85/172,
Hedeginbele village,
Madivala post, Malur Taluk,
Kolar District:563130
Tel: 080-28541059, 41163217
Fax: 080-28541059



Material Grade:

Grey iron castings: FC20, FC25, FC30
SG iron castings : 500/7, 600/3
Weight of castings: 0.1 Kgs to 30 Kgs
(machine moulding)
Upto 300 Kgs
(hand moulding)

KOLBEN

Axial Piston solutions

Established in 2007, Kolben hydraulics Ltd., is focusing on axial piston pumps and motors for YIL group. We handle the sales /service of PSM hydraulics, Russia (www.psm-hydraulics.com) for their range of high pressure axial piston pumps and motors for SAARC countries and other region. We offer a variety of axial piston products for both industrial and mobile applications. Also we provide service solution for any brand of piston pumps and motors.

KOLBEN Hydraulics Ltd.

B-80, 2nd Cross Peenya 1st Phase, Peenya Industrial Estate
Bangalore- 560058. Ph: 080 - 41170110, Mobile: + 91-9972099339
Email: kolbenhydraulics@gmail.com



Test stand



HST Pump

SAI Hydraulics

Established in 1989 SAI India Limited (SIL) is the Indian subsidiary of SAI s.p.a., Italy. We manufacture, market and service world class high torque radial piston hydraulic motors and we cater to major original equipment manufacturers in the country. We also market axial piston pumps, motors and other hydraulic spares.

SAI India Ltd.

26/C Doddanekunde Indl. Area, Phase 1, Mahadevapura Post
White Field Road, White Field, Bangalore - 560 048,
Ph: 080 28524435, Fax: 080 28524744
Email : marketing@saihydromotor.com
Group Company : **Winch House** - Manufacturers of winches



YUFLOW Engg. Pvt. Ltd.

YUFLOW was incorporated in 2002 and is a division of Yuken India Ltd. We manufacture a variety of standard and custom built cylinders for industries like steel mills, presses, machine tools and also for original equipment manufacturers of material handling, road construction, car carriers, drill rigs, fork lifts / stackers, tractors etc.,. Core inputs for our plants are super finished cylinder tubes and highly reliable sealing systems from Europe. 100% test for proof and drag with cycle tests makes the product quality and reliability comparable to global standards.

YU Flow Engg. Pvt. Ltd.

No1, II nd Cross Street, Pooniamman Nagar Road,
Ayanambakkam, Maduravoyal post, Chennai - 600 095.
Tel: + 91 44 26532496 Fax: + 91 44 26532597,
Email: marketing@yuflow.com, Website: www.yuflow.com



Hycom Engineering (India) Pvt. Ltd.

- Located in Peenya industrial area, Bangalore.
- Manufactures standard sectional and monoblock type directional control valves
- Manufactures customised rotary joints for domestic and export market.
- Valuable customers using these products include JCB India & UK, RR USA and CNH India.

Hycom Engineering (India) Pvt. Ltd.

M7-1, 6th Cross 1st Stage, Peenya Industrial Estate
Bangalore- 560058. Ph: +9180 4248 8888, Fax: +91 80 4248 8817
Email: info@hycomengineering.com , Web: www.hycomengineering.com



YUKEN Hydraulic School

Yuken India offers comprehensive training program in hydraulics. Hands on training are provided at the manufacturing plants in Bangalore coupled with extensive lectures on the theory of hydraulics and applications. The training modules are separately designed for mobile, construction, machine tool and steel mill hydraulics. Special courses are available for proportional and servo valves. The training can also be provided at the customer's premises.



YUKEN



Depend On Us

www.yukenindia.com

NORTH ZONE

26A, Community Centre
Phase 1, Mayapuri Indl. Area,
New Delhi 110 064.
Ph: 011 9818386004
TeleFax: 011-28115452
Email: kamal.sareen@yukenindia.com

EAST ZONE

Indra Prastha, 46A, Ground Floor,
Madan Mohan Malaviya Sarani,
(Formerly Chakraberia Road, North),
Kolkata 700 020.
Ph: 033-24544345 / 24544346
Fax: 033-24544348
Email: biswajit.saha@yukenindia.com

WEST ZONE

No. H-4, Ansa Industrial Premises,
Sakivihar Road, Sakinaka,
Mumbai 400 072.
Ph: 022-28472011/ 12/ 13/ 14, 28472747
FAX: 022- 28472012
Email: anand.m@yukenindia.com

SOUTH ZONE

B-80, 2nd Cross, 1st Stage,
Peenya Industrial Area,
Bangalore 560058.
Ph: 080-28390225/27
Fax: 080-28390224
Email: shankar.k@yukenindia.com

Resident engineer

111/ 20, Near Gharda nu Ghar,
Near Gandhinagar society,
Maninagar (West),
Ahmedabad 380 008.
Ph: 079-25450345
Telefax: 079-25450006
Email: yil.ahmedabad@yukenindia.com

Resident engineer

30A, "RAJHANS", Angol Extension,
Subhashchandra Nagar,
Belgaum 590 006.
Mobile: 98454 43145
Telefax: 0831- 4204698
Email: yil.belgaum@yukenindia.com

Resident engineer

No1, II nd Cross Street,
Pooniamman Nagar Road,
Ayanambakkam, Maduravoyal post,
Chennai - 600 095.
Tel: + 91 44 26532496
Fax: + 91 44 26532597,
Email: yil.chennai@yukenindia.com

Resident engineer

94, Venugopal Swamy Kovil Street,
Ganapathy, Coimbatore 641 006.
Mobile: 989426557
Telefax: 0422 4364457
Email: yil.coimbatore@yukenindia.com

Resident engineer

8-7-168/1, Plot No61A,
H.A.L Colony, Old Bowenapally,
Secunderabad 500 011
Mobile : +91 80088 83593
Ph: 040 40102734,
Email: yil.hyderabad@yukenindia.com

Resident engineer

Flat-02, Bhagirathi Housing Complex
Near Kakadepark,
Chinchwad Gaon, Pune - 411033
Mobile: +91 95610 49104
TeleFax: 020 7458992
Email: yukenpune@gmail.com

Resident engineer

68, Sanchar Nagar Main,
Kanadia Road, INDORE – 16.
Mobile No.+91-9425910650
Tel. Fax. No. 0731-2590068
E-Mail:yil.indore@yukenindia.com

U.A.E OFFICE

Flat No: 2212, Alreef – 2,
Sharjah U.A.E
Ph: +971 6 5302678
Fax: +971 6 5302679
Email: umesh@yukendubai.com

OCT 2014 - cadphoservice@gmail.com

YUKEN INDIA LTD.

Whitefield Road, Whitefield, Bangalore - 560 066.
Ph: +91 80 28457893, Fax: +91 80 28451560.
Email: marketing@yukenindia.com.
Website: www.yukenindia.com

